

PILAR BOX

Technical Specifications

(*) All parts with an asterisk are only applicable for rental of the box

Pilar box is a multipurpose performance space of 15 by 15 meters on the VUB campus Etterbeek.

Pilar BOX has a capacity of 350 standing and 90 seated

All walls are white with black curtains all around and a concrete (grey) floor.

Dimensions with curtains closed Length: 14m / Width: 14m / Height: 8.36m
Max Truss height: 6,40m

STAGE

(*) The stage is set up as followed, if the stage must be altered an additional fee of €180 will be charged.

4m x 14m
0,61m high
Max. Load: 700 kg/ m²

TRIBUNE / SEATS

The tribune consists of 9 rows with 10 seats each (90 total)
Every row is 7,41m wide and stands 29 cm higher than the previous one

SOUND FOH

Nexo 6 top M1220-I
Nexo 2 bass RS18-PI
Nexo 1 amplifier NXAMP4X4C 4 channels + Dante ready

MIXING CONSOLE

Stage Rack Allen & Heath DT168 / DT2416
Allen & Heath SQ5 WITH DANTE CARD

AUDIO TROUGH DANTE NETWORK (LR Master to I/O port 1: 31/32)

For an analog connection: bring cables that reach the backstage (25m)

LIGHT

All lights are LED

(*) STANDARD LIGHT SETUP IS NOT TO BE CHANGED AND TO BE LEFT IN ORIGINAL STATE

Please find attached at the end of this document the list of fixtures and the patch.

A dedicated control panel is installed at the stage-left entrance if you're not using the GrandMA3 console (make sure the network cable is connected to the 'Artnet' socket of the patch on the wall)

LIGHTING CONSOLE

GrandMA 3 Compact (SOFTWARE 2 AND SOFTWARE 3)

ARTNET CONNECTION

Connection available at stage left / right, Mid Back and Control room

If you want to use another console, read into how to use ArtNet



There's no support or dimmers for conventional light. However there is a power supply in our backstage that you can use if you bring your own dimrack.



- Please read the 'available power' section of this document -

TOUCAN 800

Pilar has an aerial work platform that can be used if you are licensed. USE AT OWN RESPONSIBILITY AND RISK.

By signing a rental contract with Pilar you release Pilar from all responsibilities associated with using the Toucan 800. We ensure that it is inspected quarterly.

PROJECTOR

Digital projection: HIGHlite Laser II 13,000 Lumens

Contrast Ratio: 2,000:1 (10,000:1 Dynamic) 1920 x 1200 pixels native display

Lens Highlite 1.45 - 1.74 : 1

Connection: VGA, HDMI in/out, DP, BNC + AV link over IP

Front projected on a 9m by 5m screen suspended on the last truss

Max projection size : 8,57m by 4,70m

RIGGING

6 Square trusses and 2 ladder trusses, 1 is reserved for the back black curtain and projection screen.

Can be operated individually. Operation is located at stage, stage left / coté cour in a closed cupboard.

Track 1, 2, 3, 4, 5, 6, with power.

Truss ladder track for curtain black box and projection screen. Can also be used for back drop.

Truss 3 is used for FOH audio and cannot be easily operated.

Max draw height for light in the hood is 6.40m.

No standard clogging or legs provided.

AVAILABLE POWER

Cour on stage 2 x 32A (→ 1 for the stage rack) 1 x 16A, 240V

Center of the hall: 32A

Rear of the hall: 32A (Center under seats/ TRIBUNE)

1 x 16A, 240V (Center)

2 x 16A, 240V (Cour & Jardin)

1 x 16A, 240V (Jardin)

Backstage 2 x 32A

On the back wall: 2 x 16A / 240V (Cour & Jardin)

Patch panel backstage

Fix power for grid 1 x 63A → 2 x 32A → Divided in 6 different lines of 5 (can be changed to 8) power connections (patch panel for light in the grid).

Fix power backstage 1x 63A → Divided in 4 x 32A 3 phase → Could be used for extensional dim rack.

WIFI

Please ask our production officer for logins for VUB Guests accounts. No wired connection available off stage.

ASK SPECIFICALLY IF YOU NEED A WIRED CONNECTION

SOUND LIMIT

Max 100 dBA Leq 60 min & 115 dBC Leq 60 min at FOH.

We use 10Eazy measuring software.

You are legally responsible to watch these limits. Any violation of this rule can lead to a loss of permit.

BACK STAGE ROOMS

There are 2 available backstage rooms, located on the second floor. The dressing rooms can be accessed through the stairs backstage.

NO ELEVATOR

- Backstage 1: Width: 4.3m Length: 3.6m
- Backstage 2: Width: 2.90m Length: 5.30m
Access to the terrace.
- Two shower rooms and toilets

UNLOADING

Enter through VUB Entrance 6

Loading and unloading through the loading platform to the left of PILAR entrance or through the elevator at the parking lot.

Loading platform - same level as stage height (0,61m).

Dimensions of the entrance door to the stage:
Width: 1.66m - Height: 2.12m - Diagonal: 2.74m

Dimensions public entrance door:
Width: 2.35m - Height: 2.12m - Diagonal: 3.15m

CONTACT:

Production officer:

Bjorne Baeten

Bjorne.Baeten@vub.be

+32 (0)2 629 23 26

Audiovisual technician:

Simon van Steenis

Simon.van.Steenis@vub.be

+32 483 12 67 97



VUB – PILAR

Address: Pleinlaan 2, 1050 Elsene

Access: Triomflaan, VUB ingang 6, 1050 Elsene

MA3 : BASIS SETUP / Bedieningspaneel stage left

BASIS SETUP + PATCH PILAR

Fix ID	#	Type	Mode (channel)	DMX
--------	---	------	----------------	-----

101	1	Source Four 2 Tungsten HD	Quick setup Stage (15)	4.001
102	2	Source Four 2 Tungsten HD	Quick setup Stage (15)	4.016
103	3	Source Four 2 Tungsten HD	Quick setup Stage (15)	4.031
104	4	Source Four 2 Tungsten HD	Quick setup Stage (15)	4.046
105	5	Source Four 2 Tungsten HD	Quick setup Stage (15)	5.300
106	6	Source Four 2 Tungsten HD	Quick setup Stage (15)	5.315
107	7	Source Four 2 Tungsten HD	Quick setup Stage (15)	5.330
108	8	Source Four 2 Tungsten HD	Quick setup Stage (15)	5.345

201	1	Source Four Profiel	Quick setup Stage (15)	4.061
202	2	Source Four Profiel	Quick setup Stage (15)	2.001
203	3	Source Four Profiel	Quick setup Stage (15)	2.016
204	4	Source Four Profiel	Quick setup Stage (15)	2.031
205	5	Source Four Profiel	Quick setup Stage (15)	
206	6	Source Four Profiel	Quick setup Stage (15)	
207	7	Source Four Profiel	Quick setup Stage (15)	
208	8	Source Four Profiel	Quick setup Stage (15)	
209	9	Source Four Profiel	Quick setup Stage (15)	
210	10	Source Four Profiel	Quick setup Stage (15)	

301	1	Spectral M800 Q4 Tour	16Bit Classic Strobe RGBW (15)	1.001
302	2	Spectral M800 Q4 Tour	16Bit Classic Strobe RGBW (15)	1.016
303	3	Spectral M800 Q4 Tour	16Bit Classic Strobe RGBW (15)	1.031
304	4	Spectral M800 Q4 Tour	16Bit Classic Strobe RGBW (15)	1.046
305	5	Spectral M800 Q4 Tour	16Bit Classic Strobe RGBW (15)	1.061
306	6	Spectral M800 Q4 Tour	16Bit Classic Strobe RGBW (15)	1.076
307	7	Spectral M800 Q4 Tour	16Bit Classic Strobe RGBW (15)	1.091
308	8	Spectral M800 Q4 Tour	16Bit Classic Strobe RGBW (15)	1.106
309	9	Spectral M800 Q4 Tour	16Bit Classic Strobe RGBW (15)	1.121

310	10	Spectral M800 Q4 Tour	16Bit Classic Strobe RGBW (15)	4.201
311	11	Spectral M800 Q4 Tour	16Bit Classic Strobe RGBW (15)	4.216
312	12	Spectral M800 Q4 Tour	16Bit Classic Strobe RGBW (15)	5.201
313	13	Spectral M800 Q4 Tour	16Bit Classic Strobe RGBW (15)	5.216
314	14	Spectral M800 Q4 Tour	16Bit Classic Strobe RGBW (15)	6.201
315	15	Spectral M800 Q4 Tour	16Bit Classic Strobe RGBW (15)	6.216
316	16	Spectral M800 Q4 Tour	16Bit Classic Strobe RGBW (15)	

401	1	Robe LedBeam150 M1	Mode 1 (22)	1.136
402	2	Robe LedBeam150 M1	Mode 1 (22)	1.158
403	3	Robe LedBeam150 M1	Mode 1 (22)	1.180
404	4	Robe LedBeam150 M1	Mode 1 (22)	1.202
405	5	Robe LedBeam150 M1	Mode 1 (22)	2.101
406	6	Robe LedBeam150 M1	Mode 1 (22)	2.123
407	7	Robe LedBeam150 M1	Mode 1 (22)	2.145
408	8	Robe LedBeam150 M1	Mode 1 (22)	2.167
409	9	Robe LedBeam150 M1	Mode 1 (22)	4.076
410	10	Robe LedBeam150 M1	Mode 1 (22)	4.098
411	11	Robe LedBeam150 M1	Mode 1 (22)	4.120
412	12	Robe LedBeam150 M1	Mode 1 (22)	4.142

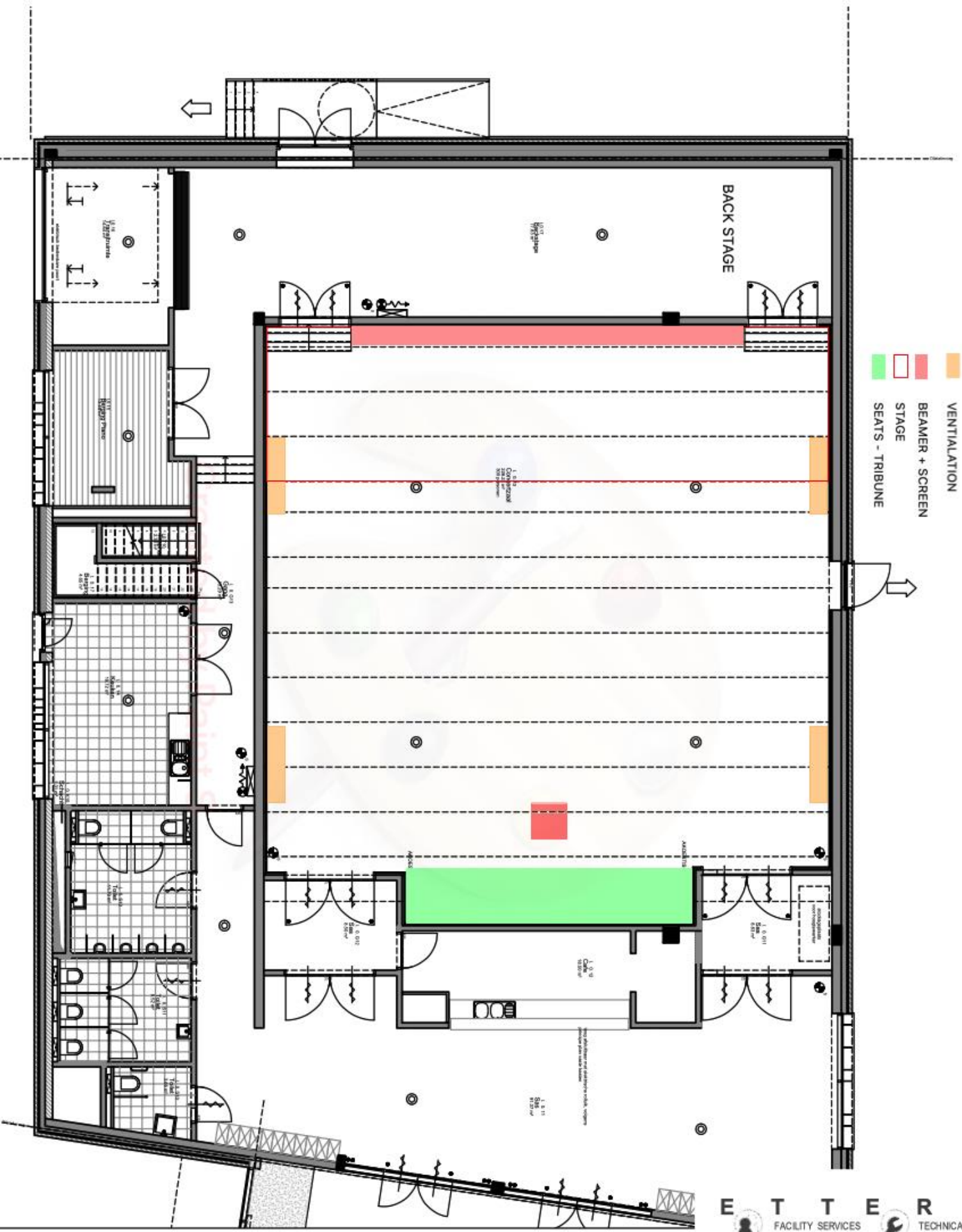
501	1	ETC ColorSource Cyc	direct (7)	5.001
502	2	ETC ColorSource Cyc	direct (7)	5.008
503	3	ETC ColorSource Cyc	direct (7)	5.015
504	4	ETC ColorSource Cyc	direct (7)	5.022

601	1	Briteq COB Blinder	4 ch	2.201
602	2	Briteq COB Blinder	4 ch	2.205

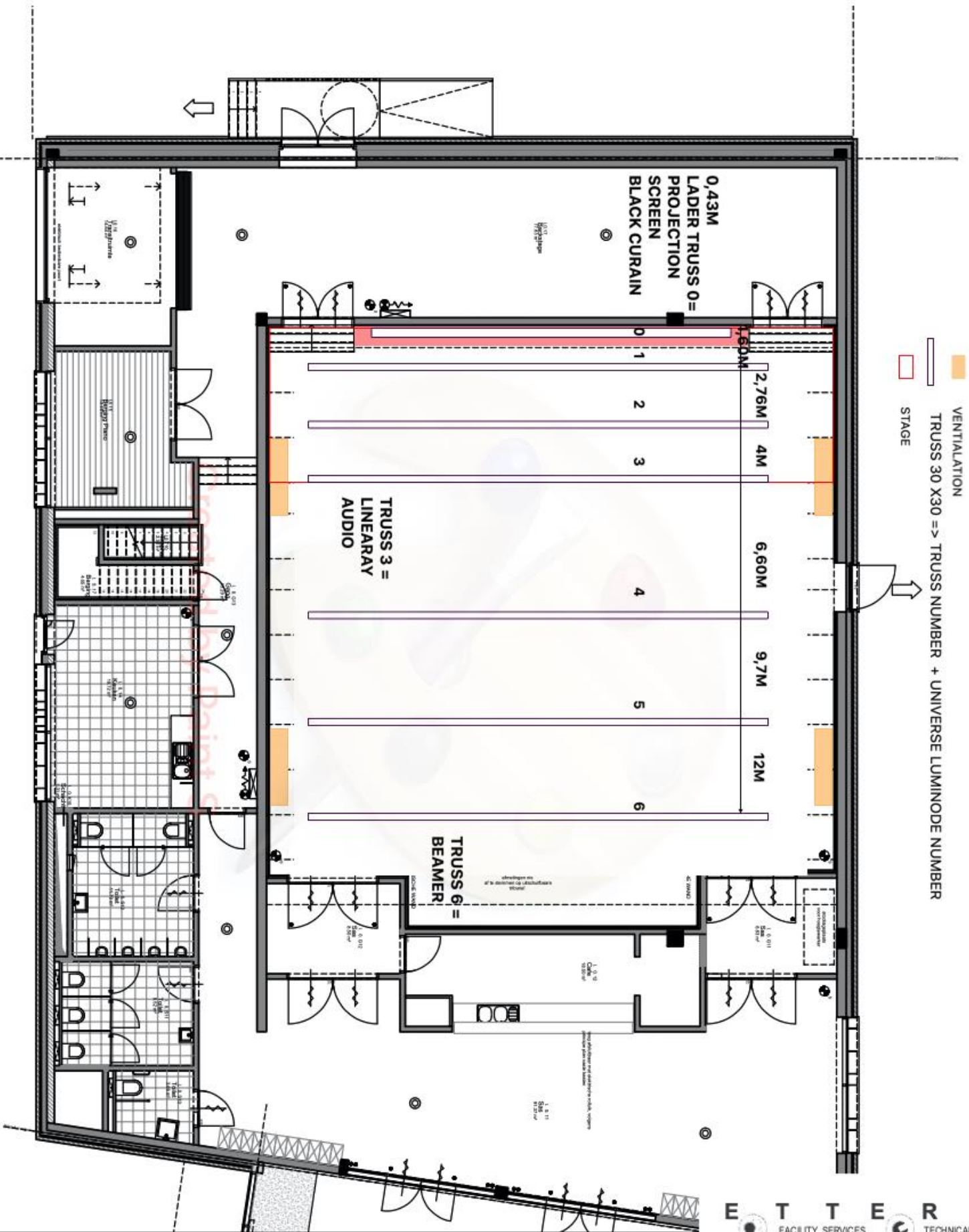
701	1	Antari HZ-500 Hazer	Mode 0	7.512
-----	---	---------------------	--------	-------

801	1	Strobe	Strobe Dimmer (2)	2.210
-----	---	--------	-------------------	-------

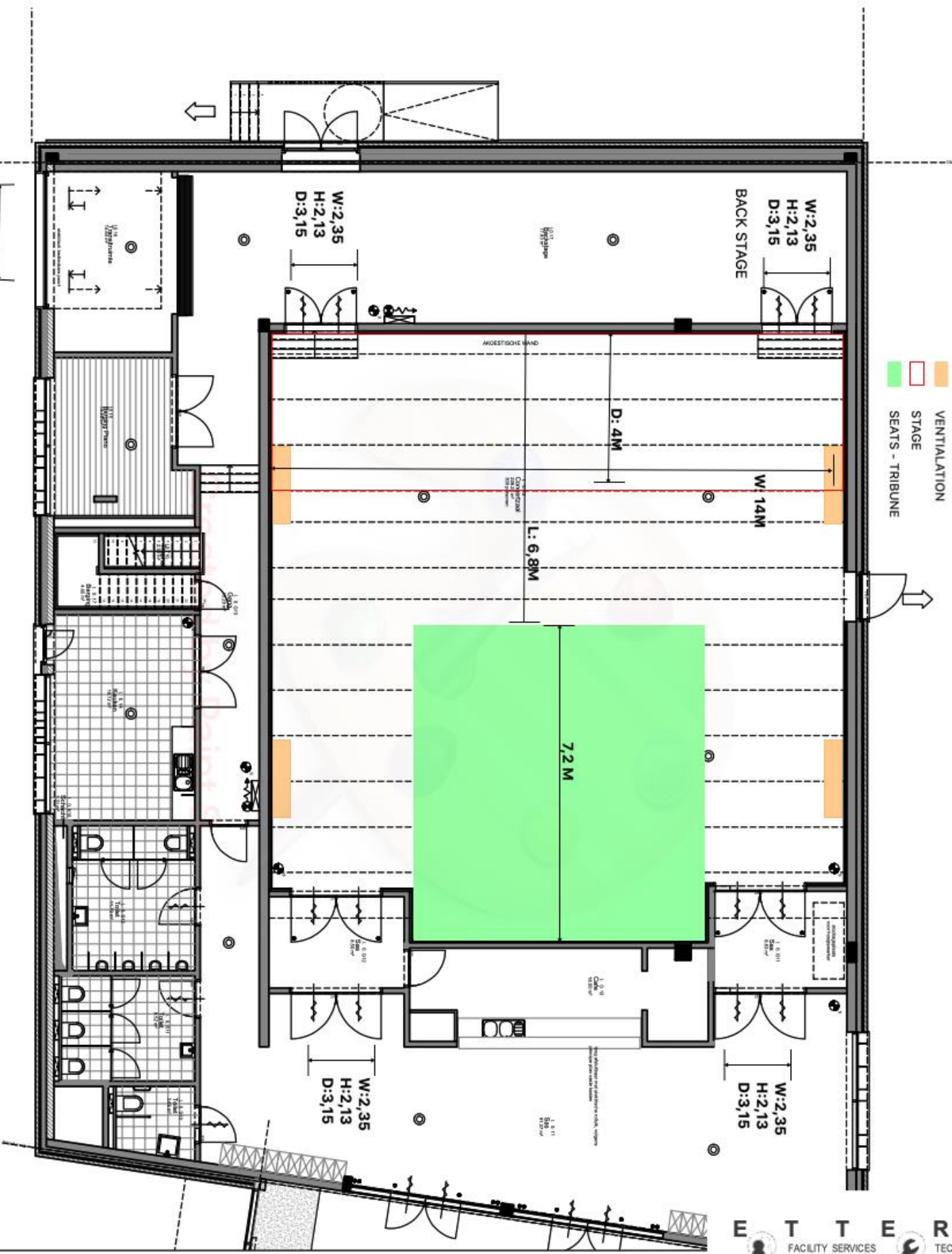
Bediening
Front
Tegen
Zaal



- VENTILATION
- BEAMER + SCREEN
- STAGE
- SEATS - TRIBUNE



W: 2,9 M
 H: 2,9 M
 H outside : - 0,66 M



VENTILATION
 STAGE
 SEATS - TRIBUNE